



**WE
ARE** ESSENTIAL
TO ALBERTA

COMMUNITY REPORT 2015



A STRONG NAIT FOR A STRONG ALBERTA

Brent Hesje

Dr. Glenn Feltham

It's an exciting time at NAIT. Every day, you can see the enthusiasm of students and the dedication of instructors. In light of current and future labour market demands, there has never been a greater need to harness the energy and power of polytechnic education and put it to work for this province. To meet these needs, we need to grow.

The Centre for Applied Technology, now nearing completion at the corner of 118 Avenue and 106 Street in Edmonton, will help us do just that. Scheduled to open its doors in fall 2016, this building will be home to 5,000 students daily from the JR Shaw School of Business, the School of Health Sciences and the School of Sustainable Building and Environmental Management. It's where our future accountants, sonographers, and engineering and architectural technologists will develop the skills to support the quality of life in our province today and tomorrow.

NAIT exists to serve this province – and it relies on you for support. Essential: The NAIT Campaign is a \$100-million fundraising effort to support student learning, improve program and equipment funding, and fund applied research and the construction of the Centre for Applied Technology. It also directly enhances the student experience through scholarships and other support. Below, we offer some of our thoughts on the value and importance of this campaign.

We're more than halfway to our goal. With your help, we'll reach it. Together, we'll have the privilege and pleasure of watching the energy on campus grow and move us ever closer to realizing our vision to be Canada's most relevant and responsive post-secondary institution and one of the world's leading polytechnics.

Sincerely,

Dr. Glenn Feltham
President and CEO

Brent Hesje
Chair, NAIT Board of Governors
Campaign Chair, Essential: The NAIT Campaign
President and CEO, Fountain Tire

ON THE NEED FOR GROWTH

BRENT: As a business leader, I often have growth in mind. To grow successfully, though, we need access to highly skilled, enthusiastic people. We've always looked to NAIT for those people and, when hiring in the future, we'll continue to do so. In this way, we see the institute as a partner.

GLENN: Long-term, industry in Alberta is expecting a labour shortfall. In fact, the latest data shows that by 2023, the shortage could be as high as 96,000 workers. Of those sectors with the greatest shortages, most look to skilled NAIT grads for success.

ON THE VALUE OF A POLYTECHNIC EDUCATION

BRENT: All new jobs come with learning curves. But a polytechnic education provides the foundational skills that help new hires adapt quickly. NAIT grads hit the ground running, bringing technical know-how and problem-solving skills that serve our company and our customers. It's no wonder that 95 per cent of employers are satisfied with NAIT grads.

GLENN: When I'm asked the definition of polytechnic education, I explain that it's hands-on learning in programs that are shaped by the current and emerging needs of industry. It prepares students to make an impact the first day on the job and sets them up for exciting, rewarding careers that make meaningful contributions to our province.

ON NAIT'S ROLE IN ALBERTA

BRENT: NAIT keeps Alberta industry innovative and competitive, which makes our province globally competitive. The pace of change can present challenges to any business or organization. The right people with the right education help secure our success.

GLENN: We all want what's best for this province. This is where we work and live – it's home. Our promise to Alberta is to meet the current and emerging needs for polytechnic education and applied research. We will meet these critical needs. Every decision we make is based on this, and every decision we make is done with our community in mind.



ON THE COVER: Read about Jaenelle Cardinal, 2015 graduate of the Carpenter and Management programs, on p. 11.

MEASURED BY THE BILLION

AN INVESTMENT IN NAIT IS AN INVESTMENT IN ALBERTA

Once again, NAIT has delivered an impressive return on investment. The proof is in the numbers.

The 2015 Economic Impact Report, a measure of the polytechnic's contribution to Alberta in terms of employment, income and more, saw even greater returns to the province and students than last year's survey.

Drawn from sources including recent graduate numbers, Statistics Canada and staff surveys, the full report is available at nait.ca/economicimpact.

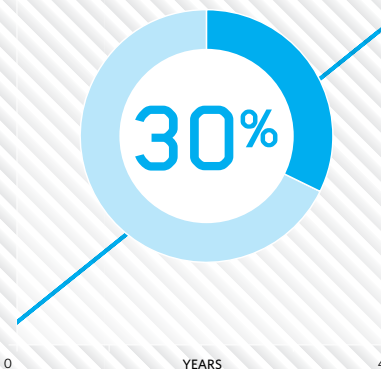
Here are highlights.

NAIT'S ANNUAL ECONOMIC IMPACT

\$1.7+
BILLION

STUDENT RETURN ON TUITION INVESTMENT

Over a 40-year career, students can expect an annual 30 per cent return on tuition invested.

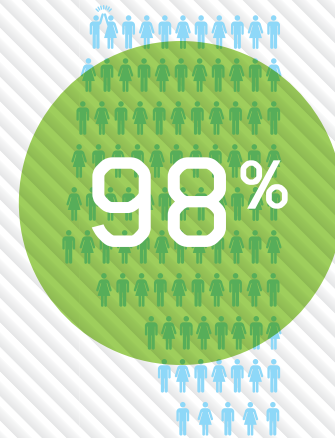


32%

ALBERTA'S RETURN ON INVESTMENT IN NAIT

For every dollar invested in NAIT, graduates provide an average annual return of 32 per cent from additional tax revenues.

GRADUATES IN THE LABOUR FORCE



EMPLOYEE SATISFACTION



2015 Employee Engagement Survey

THE PICTURE OF PROGRESS

A LOOK AT CONSTRUCTION OF THE CENTRE FOR APPLIED TECHNOLOGY

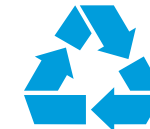
What does 51,600 square metres (555,000 square feet) really represent? The Centre for Applied Technology will be the enormous new home of 5,000 students from the JR Shaw School of business, the School of Health Sciences and the School of Sustainable Building and Environmental Management.

To make its vast surface area easier to imagine, we looked this summer at the effort and materials that went into its construction. Here's a picture of progress on the building, now less than a year from opening its doors to Alberta's future sonographers, accountants, managers of similarly huge construction projects, and many more skilled and enthusiastic contributors to our economy.

Visit techlifemag.ca/pedway.htm to watch a short video of the installation of the pedway connecting the Centre for Applied Technology to the HP Centre for Information and Communications Technology.



350
STAFF ON SITE
per day



98%
CONSTRUCTION
WASTE
recycled



2,220 TONNES / 1,000 K
REBAR
2,220 tonnes or 1,000 kilometres – roughly a return trip from the polytechnic to NAIT's Boreal Research Institute in Peace River



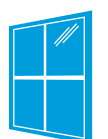
20,500 M³
CONCRETE
20,500 cubic metres – about 2,000 trucks worth



22,000 M³
EARTH
22,000 cubic metres of dirt excavated – enough to fill the pools at West Edmonton Mall's World Waterpark almost twice



933 TONNES
STEEL
933 tonnes (more than 1,000 with pedways) – about 10 full loads for an oil sands heavy hauler



22,000 M²
EXTERIOR GLASS
7,600 square metres – enough to cover a standard soccer pitch



OUR PROMISE TO ALBERTA

NAIT exists to serve this province. We promise to meet the current and emerging needs for practical, hands-on polytechnic education and to focus our research on solutions for real industry challenges. By being relevant and responsive, NAIT helps keep Alberta globally competitive.



26,000+

Students enrolled in credit programs in 2014/15, including certificate, diploma, degree and apprenticeship programs.



GETTING MOTORS RUNNING

The Reynolds-Alberta Museum's collection of documents may contain approximately 60,000 items, but gaps remain, says Laurel Neustaedter, a curator at the Wetaskiwin facility. This year, she got the opportunity to fill some of them thanks to the NAIT Library and the Automotive Services Technician program, which together donated 161 vintage service manuals, including uncommon Volvo, Nissan and Volkswagen texts. "There's such a significant car culture in Alberta: lots of car clubs, lots of people interested in collecting and restoring," says Neustaedter. The gift provides access to information that, due to age or rarity, exists only in pricey databases.



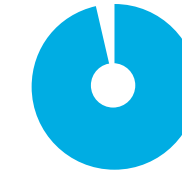
REALLY SCARY

Health Sciences students from programs including Emergency Medical Technology (EMT) - Paramedic enter their fields prepared for the worst, thanks to the unique talents of staff trained in moulage. These volunteers use makeup and other materials to create unsettlingly lifelike injuries for simulation training. That has a profound impact on students such as Keri Rempel. During a practicum this June, she responded to the aftermath of an actual shooting. Weeks earlier at NAIT, she'd run the gamut of emotion during a run-through of that scenario that was made "extremely realistic" with moulage. That experience helped her maintain control of her emotions, allowing her to do her job. "In real life, it seemed like the second time I did it," she recalls. In fact, "the real-life situation went a lot smoother than the simulation."



SHAPING YOUNG MINDS

More junior high and high school students may consider a career working with their hands thanks to a new partnership between NAIT staff and Edmonton's J. Percy Page school. This spring, Millwork and Carpentry associate chair Roger Cloutier spent a week at the school helping to build chests and model A-frame houses - giving students valuable exposure to the world of work as well as new skills. "Standing back and watching the students work and seeing their pride come forward - that is the reason why I do this," says Cloutier, whose program hopes to return next year.



96.4%

Graduates satisfied with the relevancy of their courses



VALUE-ADDED EDUCATION

Bringing innovation to Alberta industry is part of the curriculum in the Bachelor of Technology in Technology Management (BTech) program. Before graduating, students (100 per cent of whom have jobs a year after completion) tackle capstone projects that solve real business or operational challenges. They've partnered with organizations to work on everything from improving medical devices to enhancing manufacturing practices. They've also taken an entrepreneurial approach, identifying their own opportunities. In his time at NAIT, Jesse Tutt (BTech '15) developed 3D Scan Experts, a company that creates online images of properties for sale that serve as a virtual walk-through. It's a simple idea he feels will add value to industry, separating tire-kickers from serious buyers, "saving the Realtor, the buyer and seller time." Tutt's business already spans the province.



THANK YOU

WORLEYPARSONSCORD LTD.

A recent \$1-million gift from WorleyParsonsCord Ltd. will support NAIT students and assist with construction of the Centre for Applied Technology. Two campus laboratories, one for pipefitting and another for welding, will bear the company's name. "We hope this contribution will allow NAIT students to continue to receive the absolute best training to enter Alberta's workforce," says Brad Van de Veen, WorleyParsonsCord senior vice-president and general manager. "As a leading industrial construction company in Western Canada, we recognize the vital role that skilled workers play in not only our industry, but the entire province."



7,159

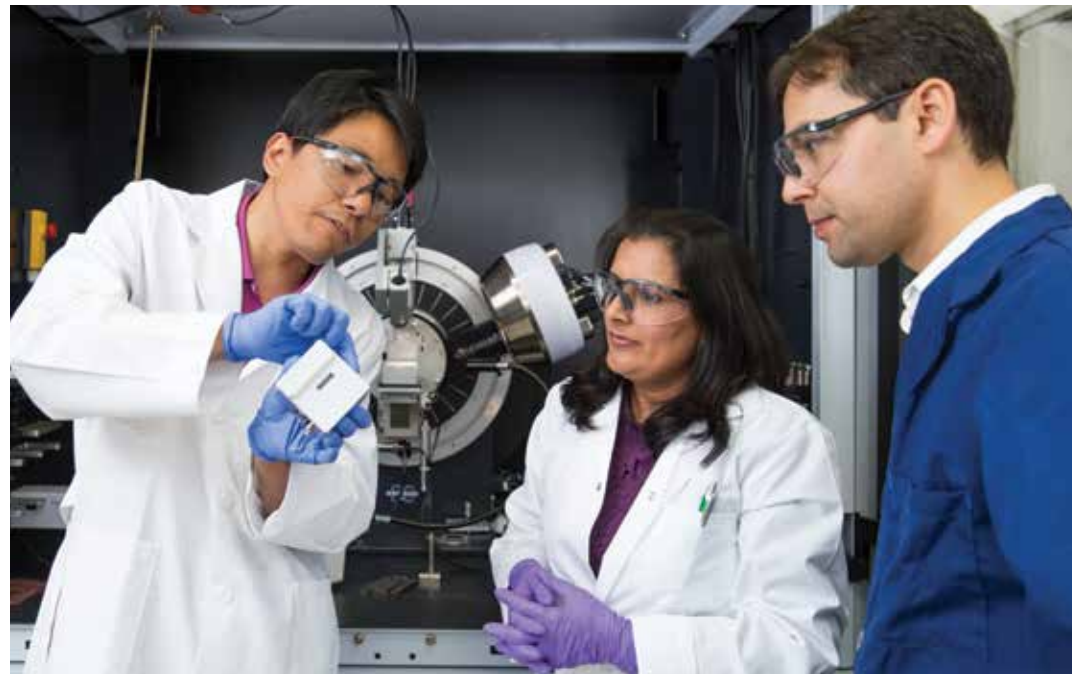
NAIT Shell
Manufacturing Centre
registrations last year.

This facility provides industry with practical education and customized courses – including topics such as project management, productivity and leadership – as well as prototyping and manufacturing expertise.



OUR PROMISE TO INDUSTRY

NAIT produces an exceptional, skilled workforce. It responds directly to the needs of industry, which helps shape our programs and guides our applied research to provide solutions for today's challenges.



FUTURE OF THE OIL SANDS

In a south Edmonton lab outfitted with the latest technology, NAIT researchers are providing industry with solutions for one of Alberta's greatest challenges: oil sands environmental sustainability. NAIT's Centre for Oil Sands Sustainability uses industry and government funding to turn existing environmental research into impactful innovations. Founded by an investment from Ledcor and in partnership with the industry's biggest players, its work focuses on tailings and water management, and monitoring and measurement, all the while ensuring that sound resource management contributes to Alberta's prosperity.



HELP WANTED

Each year during Career Fair, the polytechnic opens its campus for industry to connect directly with students – or, rather, its future employees. This year, the annual event hosted 136 employers, the highest number ever. For recruiters from local and international companies, the event is a trusted source of talent for summer jobs or post-grad careers. "Dow relies on professionally organized recruitment events such as NAIT's Career Fair to attract and attain skilled professionals to join our organization," says Gerald Weissbach, Dow human resources technical advisor, who attended the 2015 Career fair. "We are proud to have many NAIT-trained employees."



NATURALLY INCLINED

"If people want to continue to enjoy the natural landscape, we need to reclaim what we've disturbed," says Dr. Amanda Schoonmaker at the NAIT Boreal Research Institute in Peace River. As the new NSERC Industrial Research Chair for Colleges in Boreal Reclamation and Reforestation, Schoonmaker will help develop techniques to improve conditions for plants to grow on former oil and gas well sites in Alberta's boreal forest. The position involves collaboration with industry and is funded by NSERC, the Natural Sciences and Engineering Research Council of Canada. It's also a dream job: "I love science and the outdoors," says Schoonmaker.



95%

Employers satisfied
with NAIT grads



MIND OUR ELDERS

Aboriginal students are making up a growing proportion of Alberta's post-secondary sector, currently accounting for roughly four per cent of the student body. To help support them at NAIT, the polytechnic created an online Aboriginal Awareness course for staff and industry. Featuring its Cree elders – Walter Bonaise and Alsenia White – the six-week course addresses everything from the effects of colonization to ways of learning. It also has a profound impact on aboriginal people who have lost touch with their culture, points out Derek Thunder, aboriginal liaison coordinator at the NAIT Encana Aboriginal Student Centre. "It's empowering, seeing the richness of the culture. It's like being born again." The Aboriginal Awareness course is available to members of the province's post-secondary sector through eCampus Alberta.



THANK YOU

FIRST TRUCK CENTRE

Heavy equipment technicians are always in demand in Alberta. To meet the need, NAIT acquired and renovated a hangar that was part of the former City Centre Airport, next to Main Campus. Opened this fall, the 2,770-square-metre (30,000-square-foot) space will increase training capacity by as much as 60 per cent. First Truck Centre, part of a network of heavy duty truck dealerships across Alberta and British Columbia, was among the first donors to back the expansion, committing \$225,000 to support heavy equipment technician programs and \$25,000 for student scholarships. "We feel that through partnerships such as this, Alberta will continue to be a place where everyone has the opportunity to work, to grow and to prosper," says David Leeworthy, First Truck president.



OUR PROMISE TO STUDENTS

Through an educational experience that encompasses mental, emotional and physical well-being, NAIT prepares students for meaningful careers in their chosen fields. Our graduates have the skills to be successful and make an immediate impact.



TRADES TRAILBLAZER

It isn't easy being a trailblazer. Jessica Poirier, a 21-year-old Millwright apprentice, has been the lone woman among about 40 men in almost every year of her program. At the jobsite, she says, "You'll always get some people who are old-fashioned and don't take well to women in trades." That hasn't been the case in the classroom for Poirier, who says instructors and classmates have offered much support. She competed in her trade this year at Skills Canada Alberta and won, then went on to represent the polytechnic at Skills Canada - the first female to do so in NAIT's history.



BACK TO THE LAND

Farmer, chef, artist and activist, Michael Stadtländer proved an inspired and inspiring choice as the 2015 Hokanson Chef in Residence. Considered a pioneer of farm-to-table cuisine in Canada, the highly respected Ontario chef spent a week at NAIT in the spring delivering hands-on training and sharing a philosophy of sustainability he practices at his world-renowned restaurant at Eigensinn Farm. Students, you might say, ate it up. "He's someone you can look up to, but it's a goal you can reach for instead of just trying to be on TV," says Kyle Hebert, a spring graduate.



LEVEL PLAYING FIELD

Two decades after suffering a severe traumatic brain injury in her late teens, Lana McLaughlin decided to return to school. For extra help, she turned to Services for Students with Disabilities (SSD). She wasn't after "an advantage," she says - "it was just levelling the playing field." Each year, SSD provides vital services including note-taking, sign language interpreting, exam accommodations, reduced course loads and more for the roughly 1,200 people who identify as students with disabilities. In addition to other assistance, McLaughlin, now a graduate, received a thorough assessment that led to a learning strategy for the rest of her program. "And the best part was going from failing to the honour roll."



THANK YOU

SCHOLARSHIP AND BURSARY FUNDERS

Dreams rarely come true without hard work and helping hands. Both played a role in the success of Jaenelle Cardinal, who recently completed a Management diploma and a Carpenter journeyman's certificate. For help, the 33-year-old mother of two girls, aged five and 12, turned to NAIT's scholarships and bursaries - a resource worth \$4.9 million in 2013-14 - and came away with the Cenovus Energy Aboriginal Bursary, the Ledcor Group Business Administration Innovation Scholarship, the Nexen Aboriginal Student Leadership Award, the Peace Hills Trust Bursary and the CJ Woods, FCA and Family Bursary. She hopes to open a construction business and mentor young aboriginal women, a passion she pursued at NAIT as the longest-serving student ambassador in its Prospective Aboriginal Youth program.



MINDING OUR HEALTH

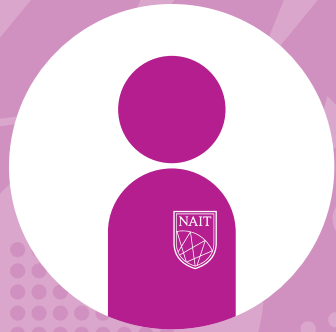
What can be done if a student has a panic attack, suffers from depression or another mental health issue? A Mental Health First Aid course at NAIT teaches staff how to react, and raises awareness and reduces the stigma around mental health issues. "The course taught me how you can handle a situation," says Mary Cumberbatch who, as administrative assistant for the NAIT Students' Association, is often a first point of contact for stressed students. "I'm using what I learned every day." The course is part of the reason the polytechnic earned a 2014 Workplace Wellness Award from the Canadian Mental Health Association Alberta Division. "It reflects our promise to students to create a positive experience that encompasses their mental, emotional and physical well-being," says Dr. Glenn Feltham, president and CEO.

91.6%

Grads of full-time programs employed

97.6%

Grads who would recommend NAIT



90.1%

Staff members who are glad they work at NAIT.

Each year, the polytechnic surveys its roughly 2,500 faculty and staff members about their feelings of fulfilment, impression of leadership and more to promote continuous improvement.

OUR PROMISE TO STAFF

NAIT's culture is reflected in our values of respect, collaboration, celebration, support and accountability. That's why the polytechnic is one of Alberta's - and Canada's - best places to work.



PRIDE WALK ON CAMPUS

This summer, staff and students participated in the polytechnic's first pride walk, marching and cheering across campus. This is just one example of the rich and deep culture of inclusivity at NAIT, and of efforts to create a welcoming environment in which to work and learn. "We should each feel safe, included and supported," says Dr. Glenn Feltham, president and CEO. To that end, the polytechnic also offers a safe spaces program for its LGBTQ community. To further support diversity on campus, NAIT is also home to a multi-faith chaplaincy service, the Encana Aboriginal Student Centre, an International Centre to support students from nearly 100 countries and Services for Students with Disabilities.



TOP WORKPLACE

For the fourth consecutive year, NAIT was recognized as one of Alberta's Top Employers according to criteria established by some of Canada's top human resources experts. Judges included the polytechnic among 2015's top 70 organizations based on high-quality professional development opportunities, as well as exceptional health and wellness benefits.



SHOOT FOR THE STARS

Staff and students take pride in the fact that, as NAIT grows, its environmental footprint shrinks. In 2012, when the polytechnic first assessed itself using the Sustainability Tracking, Assessment and Rating System (STARS) for post-secondary institutions, it ranked bronze. This year, it achieved silver - the highest for any Canadian polytechnic. Among the reasons: a 21 per cent reduction in greenhouse gases since 2007, all office paper is Forest Stewardship Council certified, and 15 per cent of courses teach sustainability. NAIT hopes for a gold rating by 2021.



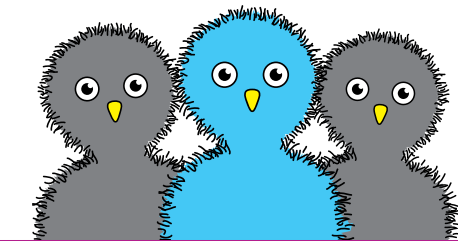
SAFE, SOUND AND SILENT

This year, Protective Services rolled out a new way to keep the polytechnic safe: bicycle patrols. "Often, bikes are quicker for getting around campus," says Lionel Pereira, bike unit sergeant. Peace officers who've completed a three-day Law Enforcement Bike Association course find that their manoeuvrability and stealth helps keep offenses such as jaywalking and car theft in check. Also, officers on bikes are perceived as more approachable than those in cars. "We want to have that community atmosphere," says Pereira. "This gives us an advantage."



BEST IN CARE

Should staff suffer injury or illness, some of the province's best care is available right on campus. In fact, NAIT's west end, trades-focused Souch Campus is home to Lora Walker, named 2015's Ruptash-Mandryk Nurse of the Year by the Alberta Occupational Health Nurses' Association. In addition to recognizing her tireless volunteerism for the association, the award highlights Walker's skills as patients' first point of contact, the quality of her guidance as an occupational health nurse, and her dedication. "If someone comes to me and leaves in a better state, that's my biggest satisfaction," says Walker.



NAIT it FORWARD
FACULTY & STAFF CAMPAIGN



THANK YOU

NAIT STAFF

Garry Wilson was part of the committee that named NAIT it Forward, a 2014 fundraising campaign that encouraged staff to give back to the polytechnic. "Paying it forward does two things," says the Electrician instructor. "It brightens people's day and then, when they reflect on it, they usually decide to do the same for someone else." The concept resonated with staff: nearly 600 participated from across the polytechnic, donating more than \$85,000 to back current programs, the Centre for Applied Technology and the NAIT Fund, which supports students. Inspired by last year's results, Wilson volunteered again this year to help NAIT it Forward.

NAIT SUPPORTERS

NAIT GRATEFULLY ACKNOWLEDGES LEADERSHIP CONTRIBUTORS OF \$1,000,000+

NAIT gratefully cknowledges the following organizations and individuals for their generous contributions during the period July 1, 2014 - June 30, 2015.

\$1,000,000 +

geoLOGIC systems Ltd.
Intergraph Canada Ltd.
Oracle Academy

\$250,000 - \$999,999

Denny Andrews Ford Sales Inc.
First Truck Centre Edmonton Inc.
Sportsnet
C.J. Woods, FCA

\$100,000 - \$249,999

George & Gay Andrews
ChemRoutes Corporation
Millar Western Forest Products Ltd.
PCL Constructors Inc.
Quikcard Charitable Foundation
Sinclair Supply Ltd.
Territorial Electric Ltd.

\$25,000 - \$99,999

3M Canada
Asbestos Workers Local 110
International Association of Heat & Frost Insulators
Cliff Cameron
Canadian Association of Petroleum Producers
Celete Inc.
Chrysler Canada Inc.
Cowan Imaging Group
Roger Dootson Charitable Foundation
Drive Products
Edmonton Oilers Community Foundation
Fortinet Inc.
Brent & Deborah Hesje
Muriel Hole
International Cooling Tower Inc.
Liberty Security Systems Inc.
MEG Energy Corp.
Microsoft Canada Co.
Nobel Biocare Canada Inc.
North Country Catering Ltd.
Ooks Athletic Association
PERI Formwork Systems, Inc.
Pure Orthodontics
The Princess Auto Foundation

\$10,000 - \$24,999

Agrium Inc.
Argus Machine Co. Ltd.
The Association of Science and Engineering Technology Professionals of Alberta
Elaine Betchinski
Frank Bochek
Butler Family Foundation
Canadian Home Builders' Association, Edmonton Region
Canadian Institute of Forestry
Rocky Mountain Section
Canadian Welding Association, Edmonton Chapter
Chartered Accountants' Education Foundation
Crossroads C & I Distributors Inc.
Cybertech Automation Inc.
The Edmonton Oil Kings Junior Hockey Club Scholarship Fund
Michael & Agnes Kan

Katie & John Lashuk
Orest Lazarowich
The Ledor Group
Maple Leaf Athletic Club Alumni Association
MDA Education Foundation
NAIT Students' Association
ONPA Architects
Petroleum Services Association of Canada (PSAC)
SPE Canadian Educational Trust Fund
Spectra Energy Corp.
Universe Machine Corporation
Yokogawa Canada, Inc.
Winroc, a division of Superior Plus Inc.

\$1,000 - \$9,999

AccuScript Reporting Services
Agriculture Financial Services Corporation
Alberta - N.W.T. Command
The Royal Canadian Legion
The Alberta Association of Architects
Alberta Blue Cross
Alberta Box Centre Inc.
Alberta Land Surveyors' Association
Alberta Nord Balliwick de la Chaine des Rotisseurs
The Alberta Petro-Chemical Safety Council
Alberta Roadbuilders & Heavy Construction Association
Alberta Roofing Contractors Association
Alberta Shorthand Reporters Association
Alberta Society of Professional Biologists
Alberta Sustainable Resource Development, Forestry Division
All Weather Windows Ltd.
Altelec Engineering Services Inc.
AMA Insurance
Amicus Reporting Group Ltd.
Arrow Engineering Inc.
Association of Retired NAIT Staff (ARNS)
Automotive Industries Association of Canada
BakeMark Canada Awards Fund held at Vancouver Foundation
Karen Bennett
Bio-Rad Laboratories (Canada) Ltd.
Ray Block
Bluebird Contracting Services Ltd.
Boys & Girls Clubs Big Brothers Big Sisters of Edmonton & Area
Richard Bremner
Angela Briggs
Broadmoor Auto Body Ltd.
Butler Manufacturing Company
Canada Car Color Inc. / PPG Canada Inc.
Canadian Hard of Hearing Association
Canadian Heavy Oil Association
The Canadian Institute of Plumbing & Heating
Cenovus Energy Inc.
Jack and Margaret Charlesworth Foundation
Chef's Hat Inc.
Choice Survey and Construction Supplies Ltd.
Dwayne W. Chomyn Professional Corporation
Clarence M. Christensen

Occupational Health & Safety Scholarship Fund at the Edmonton Community Foundation
CKUA Radio
Clark Builders
Susan Cline
Club 5 Star
Colleen of Alberta Professional Forest Technologists
Collins Industries Ltd.
Stewart Cook
Coronet Electric
Corus Entertainment Inc.
Cummins Inc.
Denturist Association of Alberta
DIALOG
Dicta Court Reporting Inc.
Tad Drinkwater
Dynamysk Automation Ltd.
Echo Promotions
Edmonton Construction Association
The Edmonton Journal
The Edmonton Rotary Club Foundation
Edmonton Sun
EllisDon Construction Services Inc.
Engineered Air
Enmax Corporation
EQUS REA Ltd.
Neil Fassina & Krista Uggerslev
Federation of Alberta Gas Co-Ops Ltd.
Henry Federici
Glenn & Tammi Feltham
David Ferro
Fillmore Construction Management Inc.
Flynn Canada Ltd.
Anna Foshay
Fountain Tire Ltd.
Fuchs Lubricants Canada Ltd.
Alice Gaydar
Gibbs Brown Johansson
Sabrina Giordano
Global Woman of Vision
Sarah and Martin Gouin Family Education Fund at the Edmonton Community Foundation
Graham Construction
Guardian Chemicals Inc.
Gene Haas Foundation and the SME Education Foundation
Malcolm Haines
Sidney & Emily Hanson
Linda (Aboughoche) Haymour
HealthPointe Medical Centres Ltd.
Gary Henrickson & Irene Szkambara
The F. Austin Hicks Foundation
JH Holloway Scholarship Foundation
The Hong-Kong Canada Business Association, Edmonton Section
Horton CBI, Limited
Kathryn and Bill Howden
Ellen Hughes
Human Resource Institute of Alberta
Hydrogeological Consultants Ltd. (HCL)
Imperial
Investors Group Financial Services Inc.
JADA Solutions (HSE) Inc.
Jen-Col Construction Ltd.
Junior League of Edmonton
Jasjit Kahlon
Dr. T.A. Kasper Family Fund at the Edmonton Community Foundation
Kingsway Oral Surgery

Kool Family Fund at the Edmonton Community Foundation
Victoria Kung
Lafarge
Alison Lewis
Lincolnberg Master Builder
Liquor Stores N.A. Ltd
Colleen Mallory
Manulife
Wendy Marusin
Lara McClelland
McElhanney Land Surveys Ltd.
MCL Power Inc.
Nancy Munro
Kevin & Lori Nabholz
NACE International - Edmonton Section
Nazamdipur Community Development Foundation
North American Powertrain Components Ltd.
Dennis O'Rourke
Pacific Dental Laboratory Inc.
Park Derochie Inc.
Jane Parkinson
Peace Hills General Insurance Company
Pembina Pipeline Corporation
Fred Pheasey
Pioneer Truck Lines Ltd.
Catherine Poon
Dr. Clarence Preitz
Priority Mechanical Ltd.
PROCOR Limited
Prospectors and Developers Association of Canada
RAE Engineering & Inspection Ltd.
Read Jones Christoffersen Ltd.
Rocky Mountain Wine & Food Festival
Allan Rowsell
G. Arnold Rumbold
Colin Ruthven
Sawridge Hospitality
Scott Builders Inc.
Servus Credit Union
Anne Marie Silvius
Vasa Skandia Award Fund at Edmonton Community Foundation
Starburst Creative
Spartan Controls Ltd.
Edward E. Stawnichy Charitable Foundation
Stuart Olson Construction Ltd.
Talisman Energy Inc.
TD Insurance Meloche Monnex Inc.
TELUS
Thermal Works Insulation
Len Treeter & Laurie Anfindsen
Universal Dental Laboratories Ltd. and Friends
VitalAire
Viva Voce Reporting Ltd.
Waschuk Pipeline Construction Ltd.
Garry Wilson
The Workun Garrick Partnership
Architecture and Interior Design Inc.
WorleyParsonsCord Ltd.
Heather Worthington
David & Debbie Wright
Dr. Robert Earl Wright

NAIT strives for accuracy in recognizing its donors and partners. Please contact the Department of Advancement about any discrepancies within this report.

HONOUR SOCIETY

NAIT acknowledges and thanks those who have made a commitment to the future vision of the institute.

Louis J. Bedard
Brian J. Dickinson
Colin W. Eicher
Dolliver H. Frederick
Suzanne Kirwin
Adolf Klingbeil
Arie E. Koudys
Richard W. Letourneau
Dan L. Maloney
Allan S. Olson
Dave Williams

TRIBUTES & MEMORIALS

Our deepest thanks to the many donors who have contributed to the scholarships and legacy funds created in honour of the following individuals:

Donald Afanasiff
Kenneth A. Alexander
James Ayres
Stewart Barr
Charles H. Beeken
Jeff Bendfeld
Monique Benoit
Michael Berry
Frank Bochek
Brad Boechler
Franz Boehm
Calvin Bohmer
Anthony Buckingham
Larry Bureau
Doug Burrows
John Butler
Fiona Cameron
Frances Camyre
Arthur Carlzon
Terry Cavanagh
Mark E. Cerezke
Stan Churchill
Brian Clarke
Sandy Colleton
John Collett
Lane Collison
Gerri Cook
Marci Cooper
Max Cooper
Clayton Joshua Crawford
Ted Cunningham
Victor C. Dadson
Pete Demetrick
Enio Di Filippo
Rick Ellis
Fallen Heroes
Dale Garraway
Rick George
Rick Gibson
Alexander Gordey
Leon Guenard
Doug Guy
John Worthington Hagerman
Duane Hall
Barbara Hanson
Hilda Hanson
F. Austin Hicks
Bill Ho
Nicholas Hruday
Ross Huebner
Ellen P. Hughes
Arlene Huhn
Kevin Indergaard
Ed Jackson
Roger Jensen
Mark Jeske
Jagdish Joshi

Macrina Kan
Corporal Bryce Keller M.M.V.
Jeff Kenny
Jeri Killam
Ronald Kirkpatrick
Paul Kollassa
Trevor Korol
Trevor Kozak
Kenneth Kwok
Jerry Lakey
Katie & John Lashuk
William Maas Lazarowich
Tom Lazaruk
Leo LeClerc
Myrna Lee
Murray Lindsay
Manuel Machado
Wayne MacIntosh
Kerry Maksymic
Hardeep Singh Mann
Frank Marusin
Louise Marusin
Jim & Mary McCaffery
David McDonald
Beth McIntyre
Farley McKenzie
RT McKenzie
Graham Miller
Clayton Milroy
Jack Mitchell
Robert Mervin Moore
Micky Mykitiuk
Jack Needham
Reubin Nehring
J. A. Norton
Earl Oleksy
Ted Ondrus
Harold L. Osland
Dwayne Ouart
Darwin Park
Laurier Perras
Charles Peterson
Steve Peto
Rod Phillips
Clarence Phipps
Frank Platt
Ernie Poscente
Dr. Karel Puffer
Garth Radons
Al Redhead
Kenton R. Reilly
Terry Reis & Sandy Sutton
Wally Romanko
Arden Rytz
Ronald "Jigger" Schmidt
Alyce Schroeder
Matthew Schwartz
Daryl K. Seaman
Naresh Sharma
Arthur & Jean Sherwin
Dennis Silzer
William Sinnema
Patrick A.R. Smith
Ronald L. Smith
Wayne Sopp
Dr. Stan Souch
Dr. Donald Stanley
Wendell Jerry Stanton
Barrymore Stratchuk
Wendy Egbert Swann
Sam & Helen Szkambara
Joan Toering
Len Treeter
Jim Tutt
Randy Van Lersberghe
Ted Wieser
John Wagar
Michael Watson
Jason Welke
Brian Wesolowsky
Steve Wild
Shaun Yandt
Chad Yarrow



Caterpillar
Foundation



John & Susan
Hokanson



Duncan & Verda
McNeill



JR & Carol
Shaw



Wirtanen
Family



I BELIEVE IN THE POWER OF COMMUNITY

At Fountain Tire, we serve communities and the people that drive them. It's what keeps our company strong and responsive.

That's why I'm proud to serve as cabinet chair for Essential: The NAIT Campaign. NAIT students, grads, staff and business partners also make a difference to their communities through education every day.

NAIT's largest fundraising campaign builds on deep and meaningful relationships. Our goal is to raise \$100 million to support student success, applied research and capital projects.

Find out more about Essential: The NAIT Campaign
nait.ca/giving

BRENT HESJE
Chair, NAIT Campaign Cabinet
Chair, NAIT Board of Governors
CEO, Fountain Tire Ltd.

ESSENTIAL
THE NAIT CAMPAIGN



A LEADING POLYTECHNIC COMMITTED TO STUDENT SUCCESS

11762 - 106 St. NW, Edmonton, Alberta, Canada T5G 2R1

nait.ca

